



1 **SMOOTH STUCCO FINISH**
DRYVIT - SLIM
FINESSE 310ST CHINA WHITE



2 **SMOOTH STUCCO FINISH**
DRYVIT - SLIM
FINESSE 105ST SUEDE



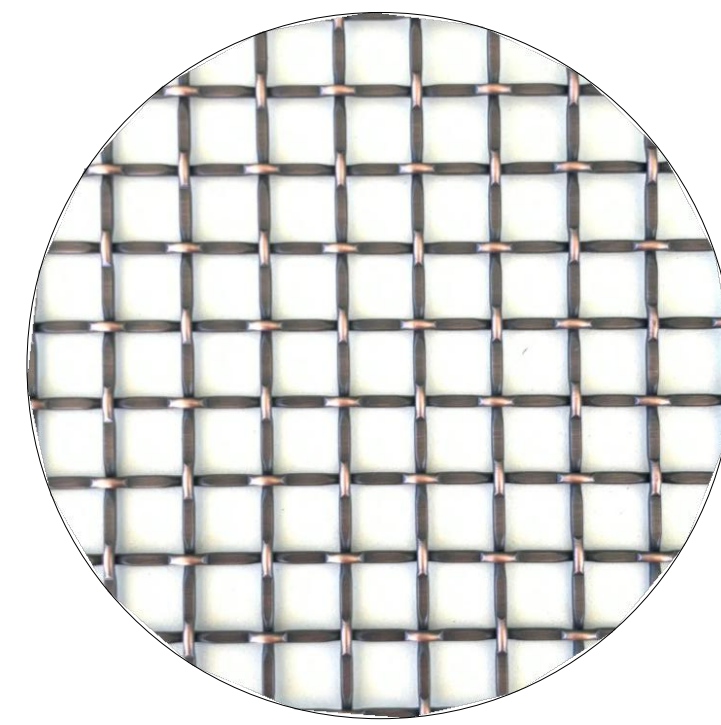
3 **WOOD-POLYPROPYLENE COMPOSITE**
KNOTWOOD - FRENCH WALNUT



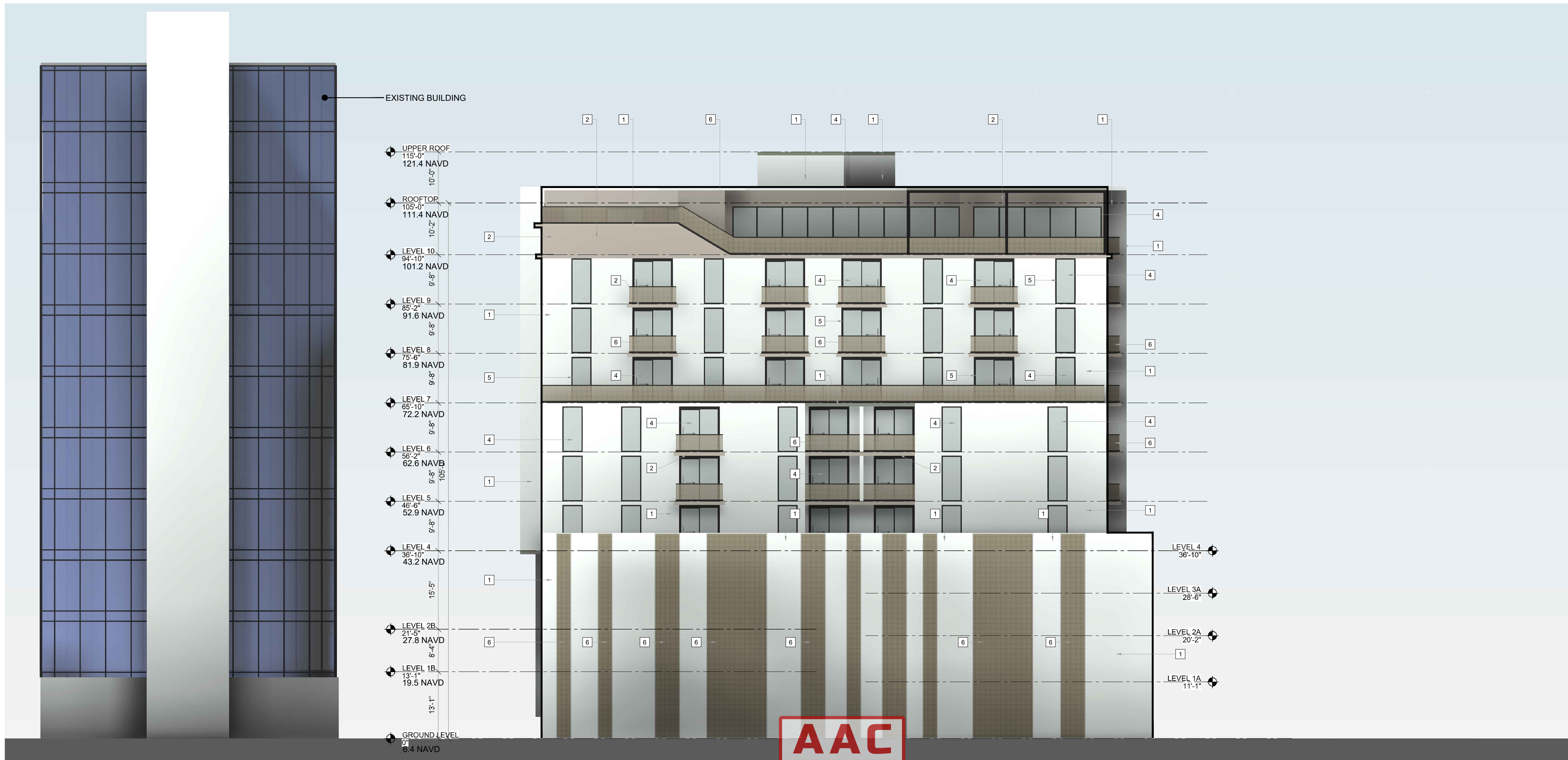
4 **TINTED GLASS FOR STOREFRONTS,**
WINDOWS, BALCONY DOORS
VIRACON - 9/16" VLE24
- 47 LAMINATED HS/HS



5 **ALUMINUM FRAME**
FOR STOREFRONTS & WINDOW
BENJAMIN MOORE
2134-30 IRON MOUNTAIN



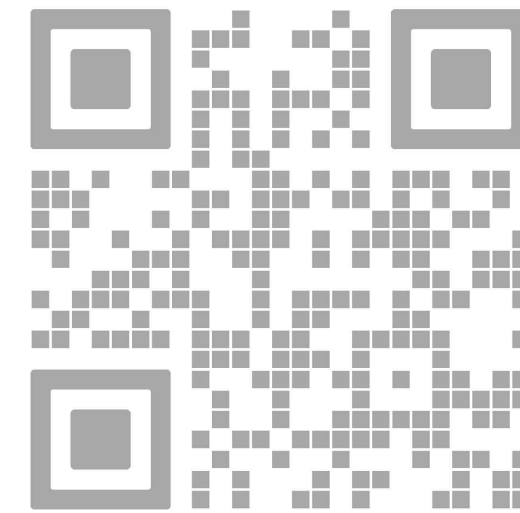
6 **METAL MESH RAILING**
& PARKING GARAGE SCREENING
BRUSHED OIL BRONZE



AAC

PZ24- 12000027
09/10/2025

01 EAST ELEVATION
A-504 SCALE: 1/4" = 1'-0"



REV.	DATE	DESCRIPTION
01	05-13-2025	DRC SUBMITTAL

ALL MEASUREMENTS MUST BE VERIFIED BEFORE
BEGINNING THE WORKS. NO MEASUREMENTS ARE TO
BE SCALED DIRECTLY FROM THIS DRAWING.

Key section

Client
VERA FUND
NICK POLYUSHKIN
& YURI KHARITONENKOV
TEL: 305.833.3303

Project
1600 S FEDERAL HIGHWAY
(MIXED-USE PROJECT)
1600 SOUTH FEDERAL HIGHWAY,
POMPAHO BEACH, FL 33062

EAST ELEVATION			
Drawn	J. WU	Field	ARCHITECTURE
Verified	N. TREMBLAY	Scale	as shown
Approved	S. L'ECUYER	Date	08-15-2025
Project Manager	J. WU	Dwg. no.	A-504
Project	24-838		